

1220 19th Street

Location

1220 19th Street NW
Washington, DC

Building Size

103,875 SF
Eight Floors
Typical Floor 12,000 SF

Role

Property Owner
Property Development
Design and Construction
Property Management

Building Status

Sold in 1995

Overview

1220 19 Street, developed and built by LDPG in 1976, is located in the Golden Triangle, the heart of Washington's central business district, which is bounded by Connecticut, New Hampshire and Pennsylvania Avenues. The wide sidewalk and landscaped plaza offer an uncrowded approach to the building that has front balconies and large windows on three and a half sides for maximum natural lighting.

Building Features

Efficient planning of floor services and elimination of lost space at the windows minimize the nonusable space per floor. Three levels of underground parking provide spaces for 78 cars. Electronic identity cards monitor access at all times. The building is close to many of Washington's finest restaurants, hotels and clubs.

Owner and Developer

Louis Dreyfus Properties has developed, acquired and managed first-class office buildings in North America and Europe for over 35 years. Its portfolio consists primarily of high quality office buildings in central business districts and major urban locations, which have included New York City; Fairfield and Westchester Counties; Washington, DC; Miami; Chicago; Portland, Oregon; Montreal; Toronto; Paris and London.

Architect

Weihe, Black and Jeffries



Property Group Partners
609 Fifth Avenue Floor 6
New York, New York
10017-1021

T 202 490-2626
F 202 490-1060

Property Group Partners
1101 New York Avenue Floor 9
Washington DC
20006-3717

T 202 470-4900
F 202 470-4889

1220 19th Street



Property Group Partners
609 Fifth Avenue Floor 6
New York, New York
10017-1021

T 202 490-2626
F 202 490-1060

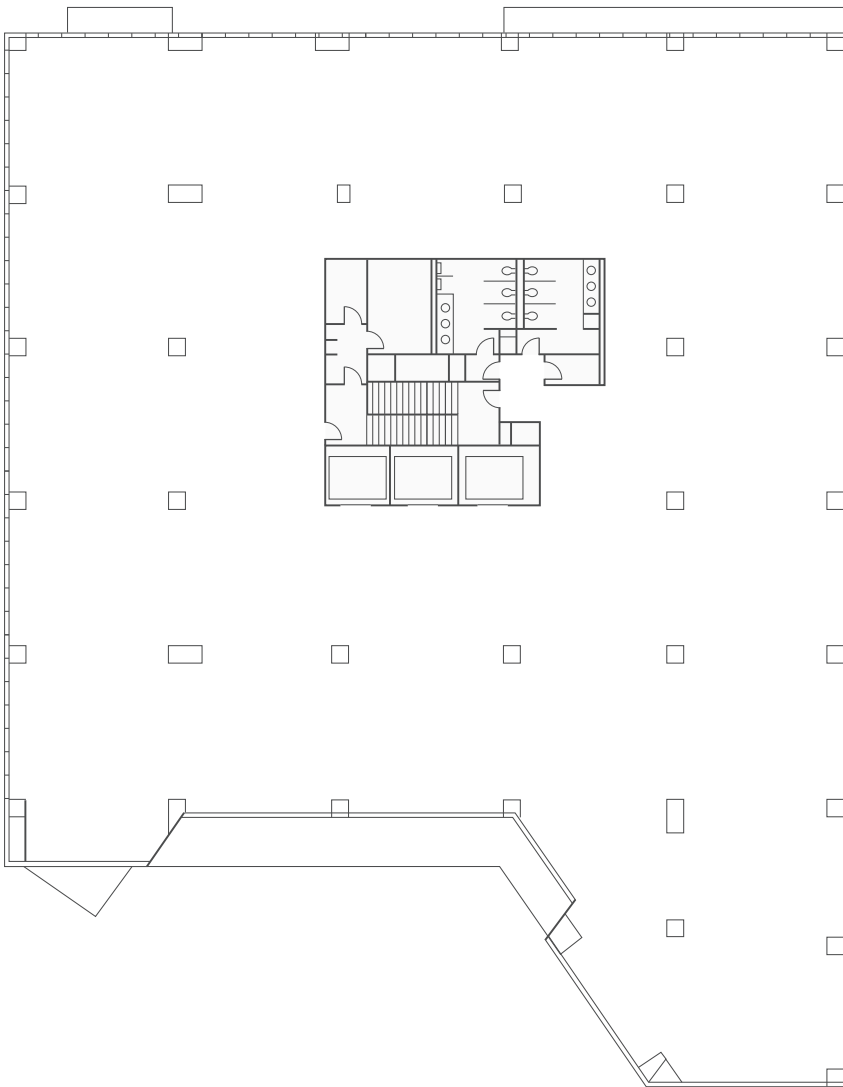
Property Group Partners
1101 New York Avenue Floor 9
Washington DC
20006-3717

T 202 470-4900
F 202 470-4889

1220 19th Street

Typical Floor

18,000 SF



Property Group Partners
609 Fifth Avenue Floor 6
New York, New York
10017-1021

T 202 490-2626
F 202 490-1060

Property Group Partners
1101 New York Avenue Floor 9
Washington DC
20006-3717

T 202 470-4900
F 202 470-4889