

527 Madison Avenue

Location

527 Madison Avenue
New York, New York

Building Size

201,001 SF
26 Floors
Typical Floor 5,700 to 12,000 SF

Role

Property Owner
Property Development
Design and Construction
Property Management

Building Status

Sold in 1997

Overview

527 Madison Avenue, developed and built by LDPG in 1986, is located in the heart of New York's Plaza district. A distinctive entrance lobby of marble and oak, nine-foot finished ceilings and full-height windows create a sense of luxury and quality. Restrooms have marble floors and vanities, full-height interior doors and frames are of oak and elevator lobbies on all floors are finished in marble and bronze.

Building Features

The high ratio of windows to interior space, floor-to-ceiling reflective glass and a minimum of interior columns give the office floors an abundance of natural light. The stepped-back design results in floors of various sizes, enabling small-to medium-sized companies to have full-floor identity and privacy. Underground parking is available with access from East 54th Street.

Investment

527 Madison Avenue is an LDPG Development property. This class A building was built on a site acquired in the early 1980s. The building was fully leased and managed by LDPG until its sale.

Owner and Developer

Louis Dreyfus Properties has developed, acquired and managed first-class office buildings in North America and Europe for over 35 years. Its portfolio consists primarily of high quality office buildings in central business districts and major urban locations, which have included New York City; Fairfield and Westchester Counties; Washington, DC; Miami; Chicago; Portland, Oregon; Montreal; Toronto; Paris and London.

Architect

Fox & Fowle Architects and The Webb Zerafa Menkes Housden Partnership



Property Group Partners
609 Fifth Avenue Floor 6
New York, New York
10017-1021

T 202 490-2626
F 202 490-1060

Property Group Partners
1101 New York Avenue Floor 9
Washington DC
20006-3717

T 202 470-4900
F 202 470-4889

527 Madison Avenue



Property Group Partners
609 Fifth Avenue Floor 6
New York, New York
10017-1021

T 202 490-2626
F 202 490-1060

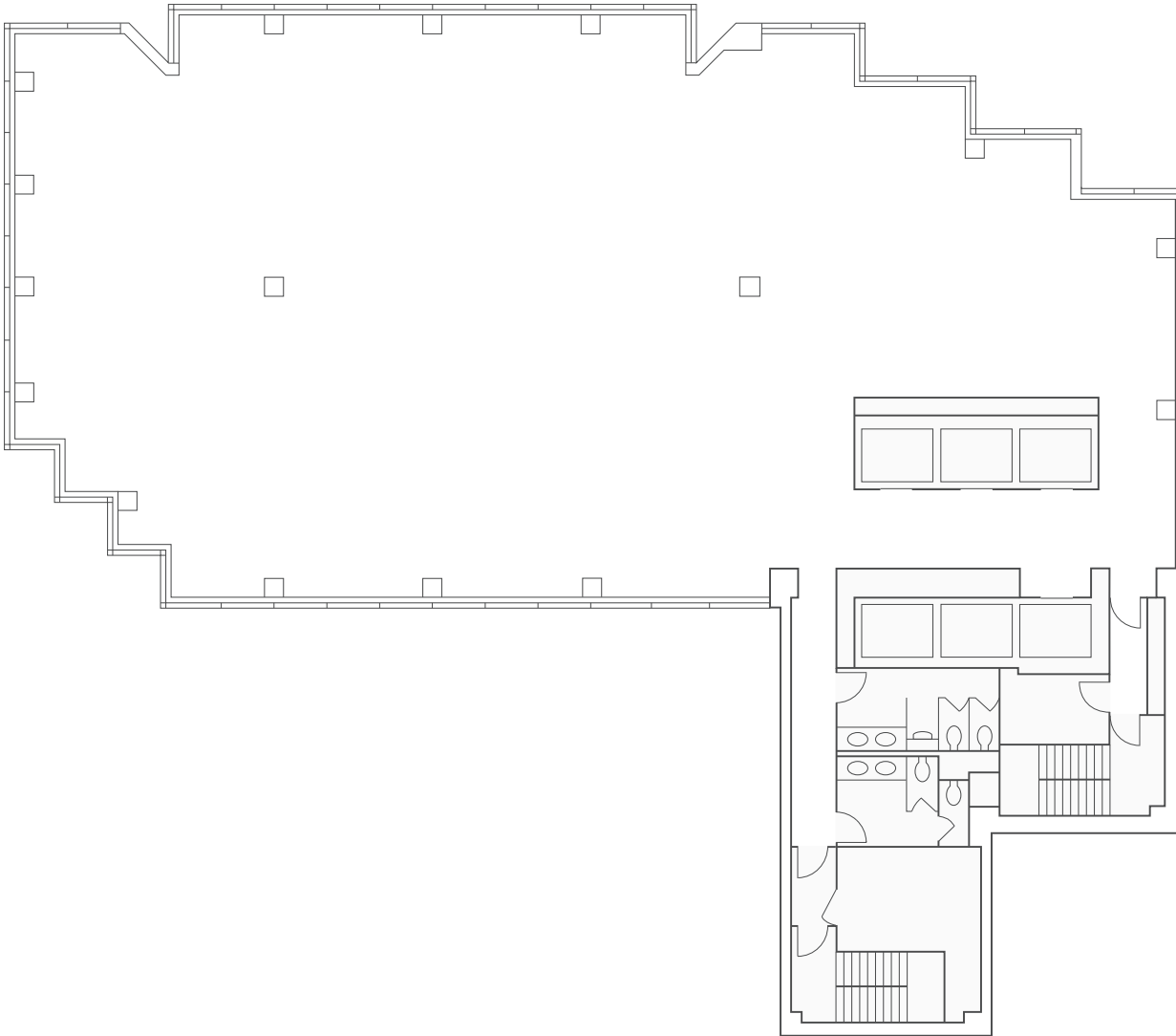
Property Group Partners
1101 New York Avenue Floor 9
Washington DC
20006-3717

T 202 470-4900
F 202 470-4889

527 Madison Avenue

Typical Floor

5,700 to 12,000 SF



Property Group Partners
609 Fifth Avenue Floor 6
New York, New York
10017-1021

T 202 490-2626
F 202 490-1060

Property Group Partners
1101 New York Avenue Floor 9
Washington DC
20006-3717

T 202 470-4900
F 202 470-4889