

# Connecticut Place

## Location

Washington Boulevard  
Stamford, Connecticut

## Building Size

580,000 SF  
23 Floors  
Typical Floor 28,000 SF

## Role

Property Owner  
Property Development

## Building Status

Sold in 2006

## Overview

Connecticut Place, is located on Washington Boulevard directly across from the UBS Building. Together these two properties form the entrance to the Gateway District of downtown Stamford. The building has a flexible design to accommodate the requirements of the small, medium and large space user. Column-free floors have well-located core services to maximize usable square footage. The building will have state-of-the-art technology, advanced building systems and the capacity for a super trading floor.

## Building Features

Floor-to-ceiling windows in some locations provide spectacular views of Long Island Sound and the surrounding area. Typical finished ceiling heights are 9 feet; some levels have finished ceiling heights of close to 11' 6". Seven levels of covered parking provide up to 2.2 spaces per 1,000 SF. A full-service cafeteria, fitness center and sundry shop are planned as tenant amenities.

## Owner and Developer

Louis Dreyfus Properties has developed, acquired and managed first-class office buildings in North America and Europe for over 35 years. Its portfolio consists primarily of high quality office buildings in central business districts and major urban locations, which have included New York City; Fairfield and Westchester Counties; Washington, DC; Miami; Chicago; Portland, Oregon; Montreal; Toronto; Paris and London.

## Architect

Skidmore, Owings & Merrill



Property Group Partners  
609 Fifth Avenue Floor 6  
New York, New York  
10017-1021

T 202 490-2626  
F 202 490-1060

Property Group Partners  
1101 New York Avenue Floor 9  
Washington DC  
20006-3717

T 202 470-4900  
F 202 470-4889

# Connecticut Place



Property Group Partners  
609 Fifth Avenue Floor 6  
New York, New York  
10017-1021

T 202 490-2626  
F 202 490-1060

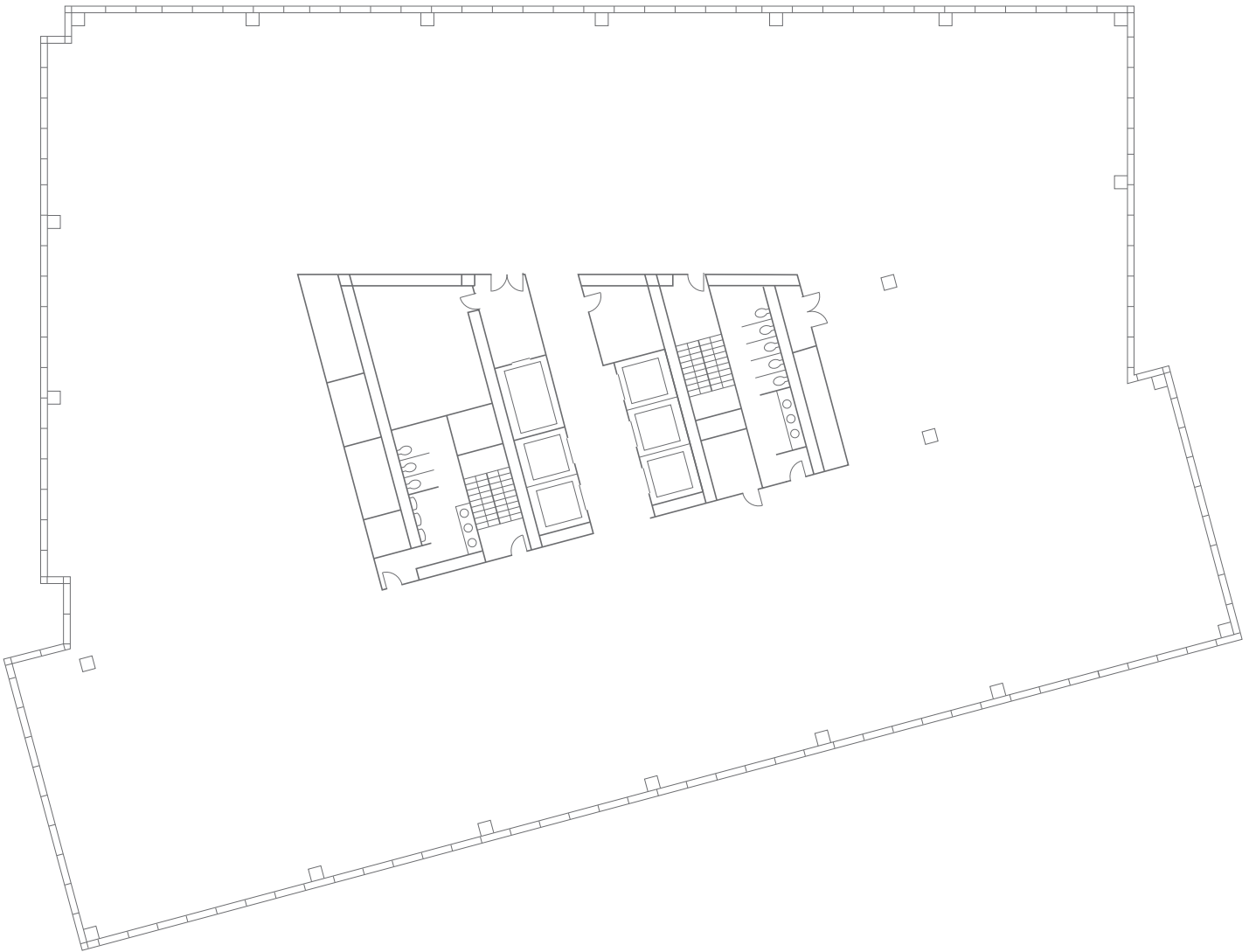
Property Group Partners  
1101 New York Avenue Floor 9  
Washington DC  
20006-3717

T 202 470-4900  
F 202 470-4889

# Connecticut Place

## Typical Floor

28,000 SF



Property Group Partners  
609 Fifth Avenue Floor 6  
New York, New York  
10017-1021

T 202 490-2626  
F 202 490-1060

Property Group Partners  
1101 New York Avenue Floor 9  
Washington DC  
20006-3717

T 202 470-4900  
F 202 470-4889