

Goldens Bridge

Location

Lewisboro, New York

Building Size

315,000 SF

Four Floors, Two Wings

Typical Floor 37,000 SF

Role

Property Owner

Property Development

Building Status

Sold in 2006

Overview

This campus-style office park development on 58 acres is in the Hamlet of Goldens Bridge, Town of Lewisboro, in Westchester County, New York. The 313,980-square-foot building, designed by Kevin Roche John Dinkeloo and Associates, takes advantage of its surroundings by fitting into the landscape and providing maximum exposure to the natural setting. A flexible building design accommodates the requirements of both a headquarters location and an efficiently planned operational facility.

Building Features

The plan includes a 400-seat cafeteria and a 5,000-square-foot fitness center. On-site parking totals 1,020 spaces on four levels below the building; parking ratio of 3.25 cars per 1,000 rentable square feet.

Owner and Developer

Louis Dreyfus Properties has developed, acquired and managed first-class office buildings in North America and Europe for over 35 years. Its portfolio consists primarily of high quality office buildings in central business districts and major urban locations, which have included New York City; Fairfield and Westchester Counties; Washington, DC; Miami; Chicago; Portland, Oregon; Montreal; Toronto; Paris and London.

Architect

Kevin Roche John Dinkeloo and Associates



Property Group Partners
609 Fifth Avenue Floor 6
New York, New York
10017-1021

T 202 490-2626
F 202 490-1060

Property Group Partners
1101 New York Avenue Floor 9
Washington DC
20006-3717

T 202 470-4900
F 202 470-4889

Goldens Bridge



Property Group Partners
609 Fifth Avenue Floor 6
New York, New York
10017-1021

T 202 490-2626
F 202 490-1060

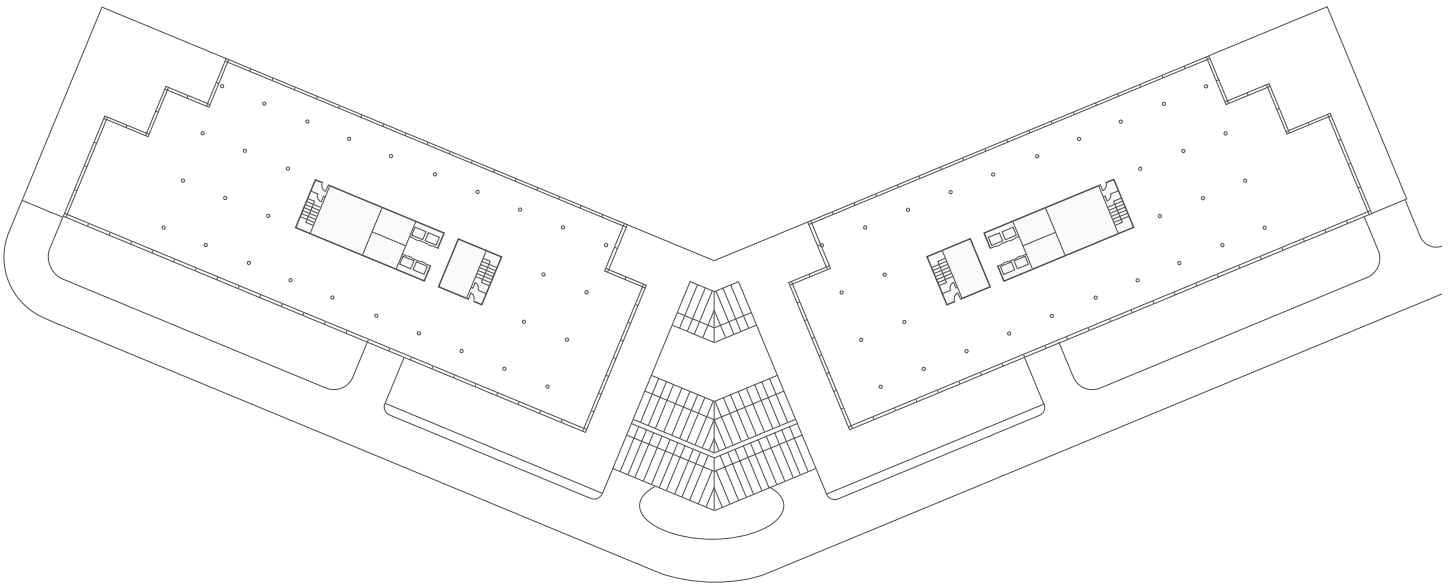
Property Group Partners
1101 New York Avenue Floor 9
Washington DC
20006-3717

T 202 470-4900
F 202 470-4889

Goldens Bridge

Typical Floor

37,000 SF



Property Group Partners
609 Fifth Avenue Floor 6
New York, New York
10017-1021

T 202 490-2626
F 202 490-1060

Property Group Partners
1101 New York Avenue Floor 9
Washington DC
20006-3717

T 202 470-4900
F 202 470-4889